

'I Can...' Science statements: Experimental and Investigative Science

Level W



I have begun to explore my immediate surroundings using my senses.

'I Can...' Science statements: Experimental and Investigative Science

Level W



I am beginning to understand that I can communicate with others to control my environment (e.g. by making a sound)

'I Can...' Science statements: Experimental and Investigative Science

Level W



I show a facial reaction / physical reaction to things brought to me to touch, see or hear.

'I Can...' Science statements: Experimental and Investigative Science

Level W



I will attend to others for a short period of time.

'I Can...' Science statements: Experimental and Investigative Science

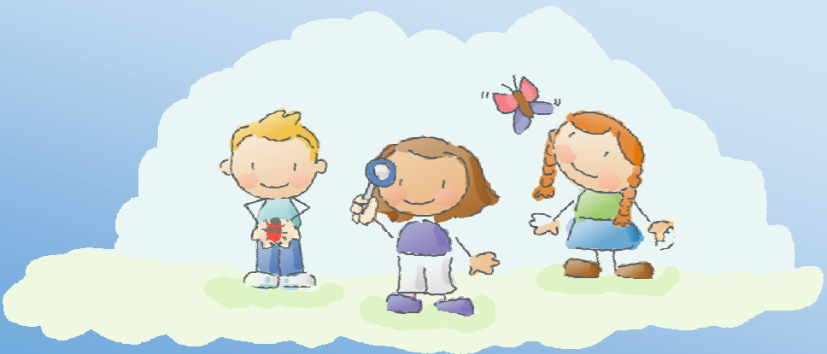
Level W



I can / will tolerate being part of a group.

'I Can...' Science statements: Experimental and Investigative Science

Level W



I will explore a range of tasks with prompts.

'I Can...' Science statements: Experimental and Investigative Science

Level W



I will explore a range of tasks independently.

'I Can...' Science statements: Experimental and Investigative Science

Level W



I can select the appropriate (and routinely used) equipment for a task.
e.g. apron for water play.

'I Can...' Science statements: Experimental and Investigative Science

Level W



I can initiate interaction when carrying out activities with others with prompts.

'I Can...' Science statements: Experimental and Investigative Science

Level W



I can initiate interaction when carrying out activities with others without prompts.